

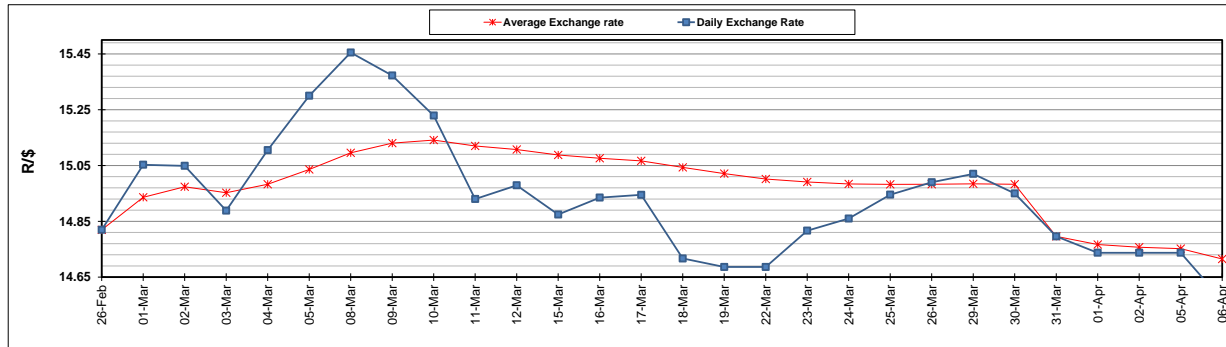
	PETROL 95 ULP	PETROL 93 ULP & LRP	DIESEL 0.05%	DIESEL 0.005%	ILL. PAR.
GAUTENG PUMP PRICE (SA c/l) AS FROM 07/04/2021	1,732.000	1,710.000	-	-	-
WHOLESALE PRICE (SA c/l) AS FROM 07/04/2021	-	-	1,477.620	1,480.020	880.488
SINGLE NATIONAL MAXIMUM RETAIL PRICE	-	-	-	-	1,106.000
BASIC FUEL PRICE - 06/04/2021 (SA c/l)	710.235	696.815	642.039	644.638	622.783
PRESS RELEASE CONTRIBUTION TO BFP 31/03/2021 - 06/04/2021 (SA c/l)	665.170	658.170	653.630	658.030	633.128
UNIT OVER/(UNDER) RECOVERY - 06/04/2021 (SA c/l)	(45.065)	(38.645)	11.591	13.392	10.345
AVERAGE BASIC FUEL PRICE 31/03/2021 - 06/04/2021	717.603	702.308	640.266	642.820	622.789
AVERAGE UNIT OVER/(UNDER) RECOVERY 31/03/2021 - 06/04/2021	(52.433)	(44.138)	13.364	15.210	10.339

### ANALYSIS MOVEMENT OF AVERAGE OVER/(UNDER) RECOVERY

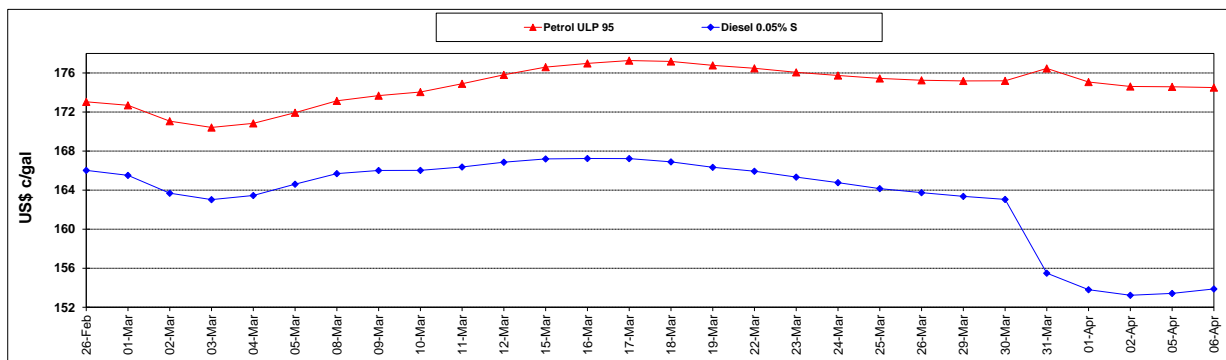
	PETROL 95	PETROL 93	DIESEL 0.05%	DIESEL 0.005%	ILL. PAR.
- MOVEMENT IN INTERNATIONAL PRODUCT PRICES	(65.498)	(56.924)	1.707	3.507	(0.999)
- MOVEMENT IN EXCHANGE RATE	13.065	12.786	11.657	11.703	11.338
AVERAGE UNIT OVER/(UNDER) RECOVERY 31/03/2021 - 06/04/2021	(52.433)	(44.138)	13.364	15.210	10.339

### R/\$ EXCHANGE RATE - (R/\$14.5670 - 06/04/2021)

#### EXCHANGE RATE USED IN BASIC FUEL PRICE



#### INTERNATIONAL PRODUCT PRICES OF BASKET USED IN BASIC FUEL PRICE



#### BASIC FUEL PRICE IN SA CENTS PER LITRE

